



Jupiter Tequesta Garden Club, Inc.

Dotty Wisch, President

General Topic: Water Projects

A. Supporting the Project by

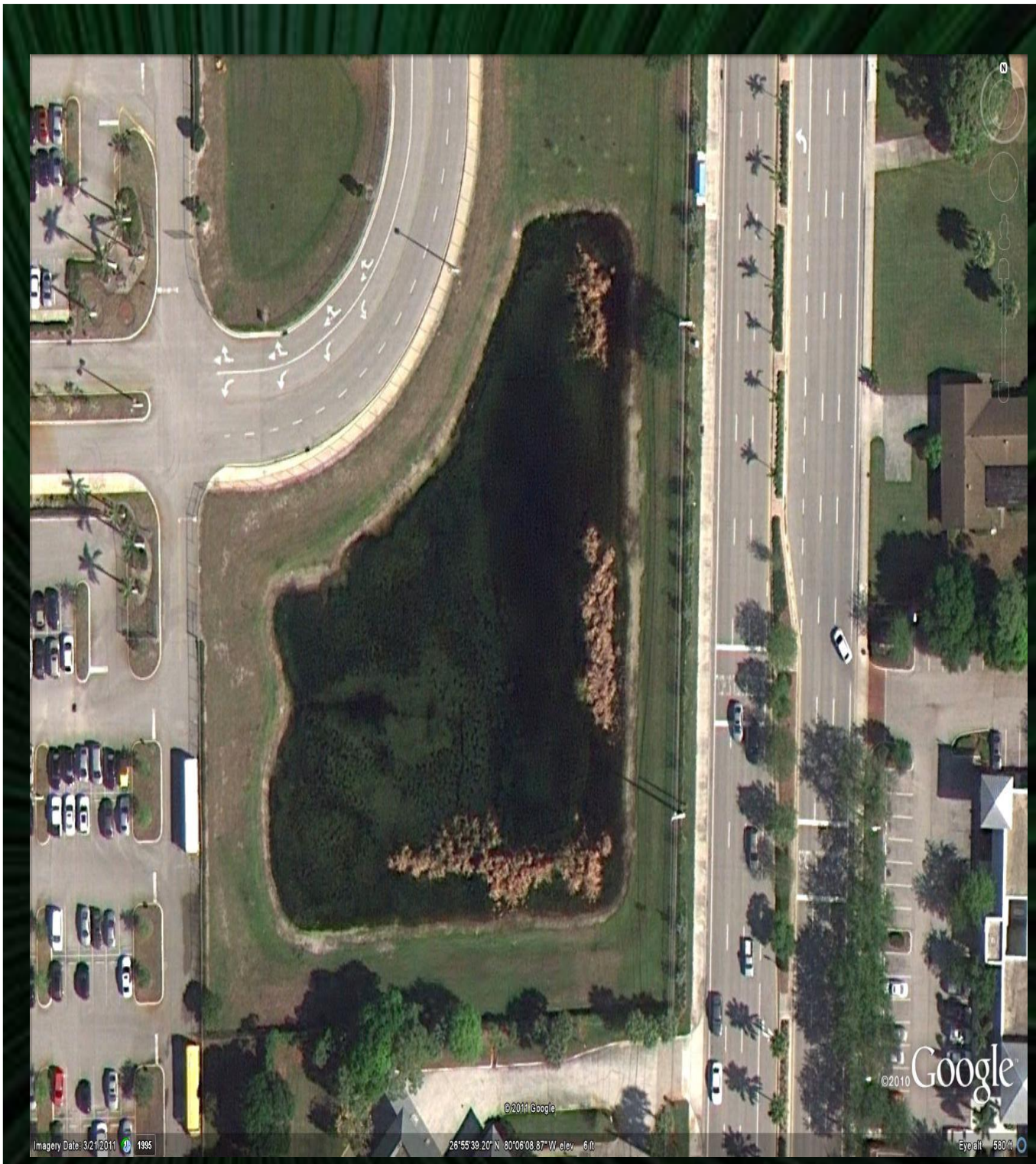
Partnership for Environmental Education called

"Jupiter High School Created Wetlands Laboratory" *

Our club has decided to help Jupiter High School turn its retention pond on Military Trail into a science lab for the kids in the Environmental Academy. Karen Betz who had designed the Wakodahatchee Wetlands natural area has come up with a plan. *(See Attachment #1). They are starting with a mowed, sprayed, and sterile pond. We are sponsoring plantings going from the littoral shelf plants transitioning through to pine flatwoods and oak hammocks. They will stock it with fish and other appropriate wildlife.

It will have a small boardwalk where students will take samples to analyze the water, watch water levels, and be able to study wetlands. It will take a couple of years to complete, and if it is successful they could use it as a template for the retention pond at the elementary school across the road.

Notes: Many places in Florida have these retention ponds, since it was required on building sites to keep all of the runoff water on site. Mosquito fish, *Gambusia* _____, show up and live in these ponds to help eat the mosquito larvae. No one knows exactly how this happens. They can be a problem for native wetland fish.



Jupiter High School Created Wetlands Laboratory 



A. Water Testing Going on by Two of our Members

Two of our members, Annie Hite and Judy Wilson, live on opposite sides of the North Fork of the Loxahatchee River and share a data point in water testing for the Loxahatchee River District. (our sewage district)

Ms. Hite says “Members of the public who test river water on the Loxahatchee are based all around the river. We test weekly for clarity, depth, temperature, salinity, pH and dissolved oxygen. The results are sent to the Loxahatchee River District lab and analyzed by David Porter, a laboratory technician, who uses the results to inform the District's Board of Directors on conditions in the river. The results are also forwarded to the Marine Resources Council in Palm Bay because we lie at the southern end of their jurisdiction. (Waters of the Loxahatchee make up the lower part of the Indian River Lagoon). So the tests are a monitoring tool with regard to the health of the river and help officials make proper decisions based in part on the information collected.”

“The District has high tech water monitoring stations, and the volunteers are an adjunct to that. As volunteers, we receive training on testing and must perform quality assurance tests throughout the year to be sure our instruments are working properly. Testing by volunteers is also a way to get the community more involved with the river - more aware of how it works and behaves as a water body system.”

B. Water Wetlands Picture Project

a.k.a. Photographing Green Slime not related to Halloween Celebrations

An FFGC project that you can participate in is the picture project --- if you can photograph an algae troubled body of water and e-mail said photograph to Pat Carver at carverge@aol.com, or Libby Curnow at webmaster@ffgc.org.

You would need to identify who you are, the date, where the photo was taken on which body of water, and which District it is located in. The plan is to show our lawmakers how pollution is causing algae outbreaks and where these hot spots are.